

FSB

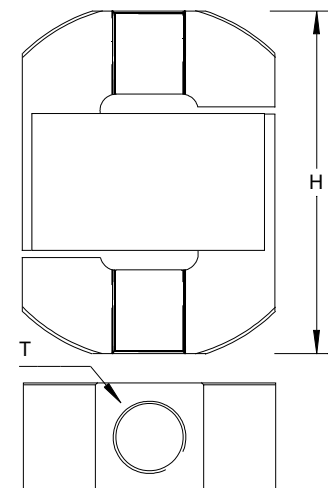
S-Beam Load Cell

25kg to 5000kg
Tension & Compression
Stainless Steel
High Accuracy

Rated Capacities ¹	25 , 50 , 100 , 250 , 500 1000 , 2500 , 5000	kg
Full Scale Output (FSO)	2.0 (±0.25%)	mV/V
Zero Output (ZO)	< ± 1 %	FSO
Bridge Resistance	350 (nominal)	Ω
Excitation	5 to 15	V ac/dc
Non-repeatability	0.02 %	FSO
Accuracy ²	0.05 %	FSO
Compensated temp.	0 to +50	°C
Operating temp.	-10 to +70	°C
Environmental Sealing	IP65	to BS EN60529

Capacity	H	T
25kg - 250kg	70	M8 x 1.25p
500kg , 1000kg	70	M12 x 1.75p
2500kg	95	M16 x 2.0p
5000kg	95	M24 x 2.0p

mm



Connections :

3 Metres 4-core Cable ³
 + Supply - Red
 - Supply - Blue
 + Signal - Green
 - Signal - Yellow
 Overall Screen

Options :

- Tension & compression fittings.
- Standardised output for multiple cell systems.
- Instrumentation / system calibration.
- Plug & socket connection.

¹ Safe overload 150% Rated Capacity. Ultimate load 300% Rated Capacity.

² Combined error, considering non-linearity & hysteresis as deviation from best straight line, from ZO to FSO.

Correct mounting of the load cell is essential to achieve optimum performance.

³ Calibration void if cable length is altered.

The information provided is intended for product description only.
 Specifications are subject to change.
 Full product details available on request.

Force Logic UK Ltd

N4 Lambs Farm Business Park
 Swallowfield
 Berkshire RG7 1PQ
 UK
 +44 (0)118 988 8807
 info@force-logic.co.uk

www.force-logic.co.uk

Force
LOGIC UK
 Manufactured in the UK 