

# FSB

## S-Beam Load Cell

25kg to 5000kg  
Tension & Compression  
Stainless Steel  
High Accuracy

Rated Capacities <sup>1</sup>	25 , 50 , 100 , 250 , 500 1000 , 2500 , 5000	kg
Full Scale Output (FSO)	2.5 (nominal)	mV/V
Zero Output (ZO)	< ± 1 %	FSO
Bridge Resistance	350 (nominal)	Ω
Excitation	5 to 15	V ac/dc
Non-repeatability	0.02 %	FSO
Accuracy <sup>2</sup>	0.05 %	FSO
Compensated temp.	0 to +50	°C
Operating temp.	-10 to +70	°C
Environmental Sealing	IP65	to BS EN60529

Capacity	H	T
25kg - 250kg	70	M8 x 1.25p
500kg - 1000kg	70	M12 x 1.75p
2500kg - 5000kg	95	M16 x 2.0p

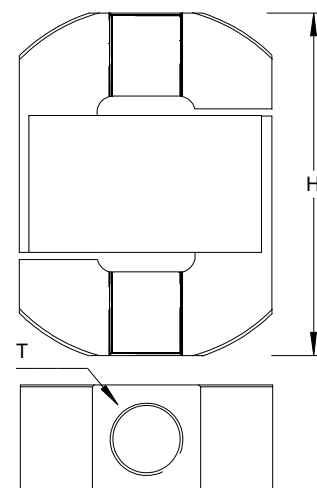
mm

### Connections :

3 Metres 4-core Cable <sup>3</sup>  
 + Supply - Red  
 - Supply - Blue  
 + Signal - Green  
 - Signal - Yellow  
 Overall Screen

### Options :

- Tension & compression fittings.
- Standardised output for multiple cell systems.
- Instrumentation / system calibration.
- Plug & socket connection.



<sup>1</sup> Safe overload 150% Rated Capacity. Ultimate load 300% Rated Capacity.

<sup>2</sup> Combined error, considering non-linearity & hysteresis as deviation from best straight line, from ZO to FSO.

Correct mounting of the load cell is essential to achieve optimum performance.

<sup>3</sup> Calibration void if cable length is altered.

The information provided is intended for product description only.  
 Specifications are subject to change.  
 Full product details available on request.

#### Force Logic UK Ltd

N4 Lambs Farm Business Park  
 Swallowfield  
 Berkshire RG7 1PQ  
 UK  
 +44 (0)118 988 8807  
 info@force-logic.co.uk    www.force-logic.co.uk

**Force**  
**LOGIC** UK  
 Manufactured in the UK