



CDC

Compression Load Cell

0.5tonne to 10tonne
Low Profile
Stainless Steel

Rated Capacities ¹	0.5 , 1 , 2.5 , 5 , 10	tonne
Full Scale Output (FSO)	2.0 (±0.25%)	mV/V
Zero Output (ZO)	< ± 1 %	FSO
Bridge Resistance	700 (nominal)	Ω
Excitation	5 to 15	V ac/dc
Non-repeatability	0.05 %	FSO
Accuracy ²	0.2 %	FSO
Compensated temp.	+10 to +50	°C
Operating temp.	-10 to +60	°C
Environmental Sealing	IP65	to BS EN60529

Capacity	A	B	C	D
0.5 , 1 , 2.5	63	25	M4	48
5 , 10	100	39	M6	80

tonne mm

Connections :

3 Metres 4-core Cable ³
 + Supply - Red
 - Supply - Blue
 + Signal - Green
 - Signal - Yellow
 Overall Screen

Options :

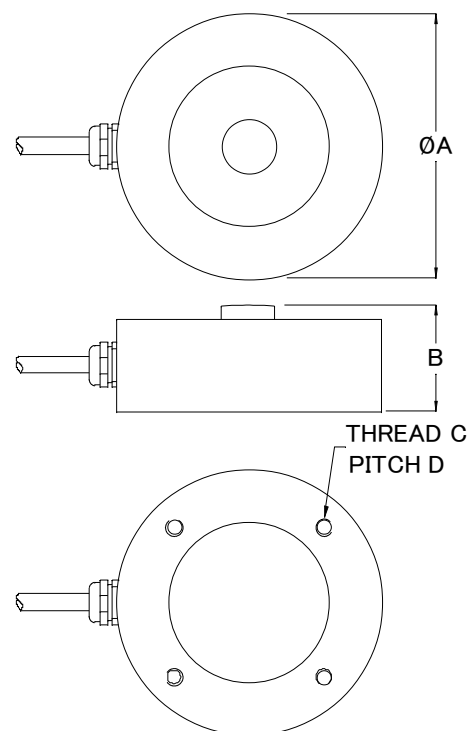
- Base Plate
- Standardised output for multiple cell systems.
- Instrumentation / system calibration.

- ¹ Safe overload 150% Rated Capacity. Ultimate load 300% Rated Capacity.
- ² Combined error, considering non-linearity & hysteresis as deviation from best straight line, from ZO to FSO.
Correct mounting of the load cell is essential to achieve optimum performance.
- ³ Calibration void if cable length is altered.

The information provided is intended for product description only.
 Specifications are subject to change.
 Full product details available on request.

Force Logic UK Ltd

N4 Lambs Farm Business Park
 Swallowfield
 Berkshire RG7 1PQ
 UK
 +44 (0)118 988 8807
 info@force-logic.co.uk www.force-logic.co.uk



Force
LOGIC UK
 Manufactured in the UK