



CCL

Universal Column Load Cell

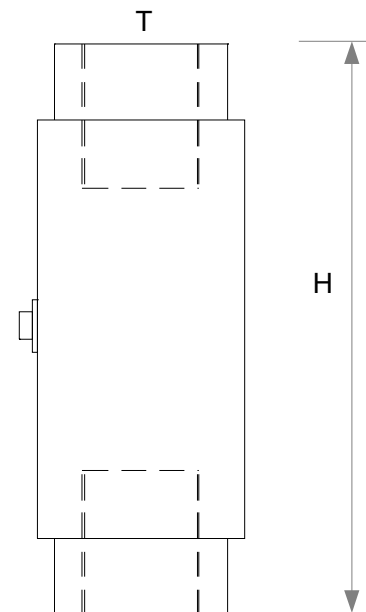
50kN to 500kN

Tension & Compression
High Stability

Rated Capacities ¹	50 , 100 , 250 , 500	kN
Full Scale Output (FSO)	1.5 (nominal)	mV/V
Zero Output (ZO)	< ± 1 %	FSO
Bridge Resistance	700 (nominal)	Ω
Excitation	5 to 15	V ac/dc
Non-repeatability	0.02 %	FSO
Accuracy ²	0.1 %	FSO
Compensated temp.	0 to +50	°C
Operating temp.	-10 to +70	°C
Environmental Sealing	IP65	to BS EN60529

Capacity	H	T
50 kN	110	M24 x 2p
100 kN	175	M30 x 2p
250 kN	220	M36 x 3p
500 kN	300	M56 x 4p

mm



Connections :

Screw fitting chassis socket.
Mating plug and 3 Metre cable
(unless extra specified).³

Options :

- Tension & compression fittings.
- Standardised output for multiple cell systems.
- Instrumentation / system calibration.
- 6-core cable connection.

¹ Safe overload 150% Rated Capacity. Ultimate load 300% Rated Capacity.

² Combined error, considering non-linearity & hysteresis as deviation from best straight line, from ZO to FSO.

Correct mounting of the load cell is essential to achieve optimum performance.

³ Calibration void if cable length is altered.

The information provided is intended for product description only.
Specifications are subject to change.
Full product details available on request.

Force Logic UK Ltd

N4 Lambs Farm Business Park
Swallowfield
Berkshire RG7 1PQ
UK
+44 (0)118 988 8807
info@force-logic.co.uk

www.force-logic.co.uk

CCLDS_1.1

Force
LOGIC UK
Manufactured in the UK 